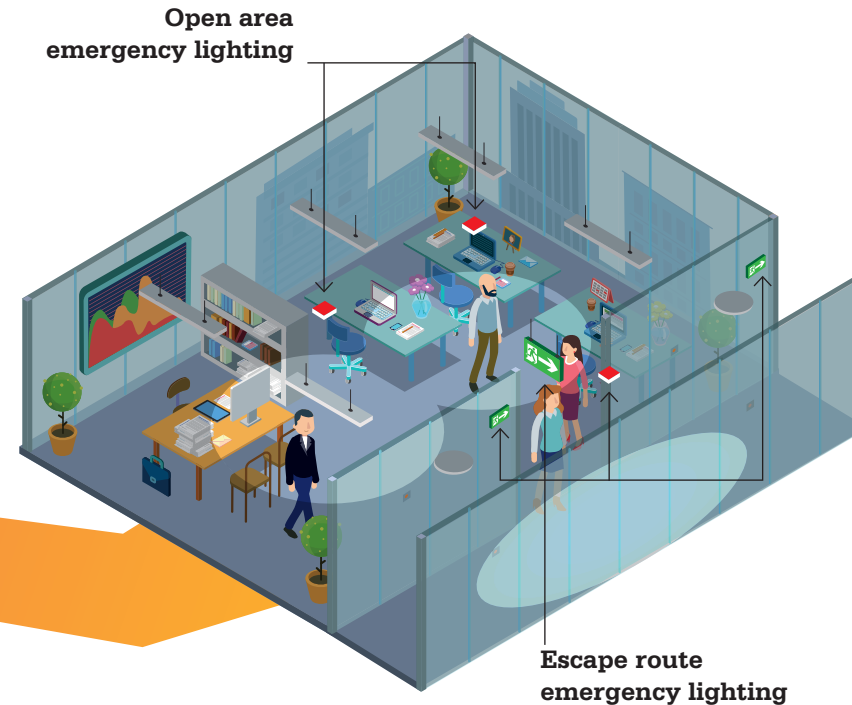




## What is emergency lighting?

- Lighting for use when the supply to the normal lighting fails.
- In case of power outages, emergency lighting illuminates and guides your path to safety.
- Emergency lighting is installed in all types of buildings, with the possible exception of single dwellings.



## Mandatory

- Emergency lighting is a European legal requirement, it has to be installed, it has to work and needs to be tested and maintained.
- National laws may emphasise specific applications and/or performances.
- All emergency lighting products must be CE marked and comply with relevant product requirements.

### EU Legislation

#### Workplace Directive (89/391/EEC) Lighting levels

- Specific emergency routes and exits must be indicated by signs
- Emergency lighting must provide adequate intensity in case the lighting fails

#### Signs Directive (92/58/EEC) Lay-out for escape signage

- Devices must be regularly cleaned, maintained, checked, repaired and replaced
- Signs requiring some form of power must be provided with a guaranteed emergency supply

### EU Standards

#### Application standards

- EN 1838 - in buildings
- EN 12193 - in sports facilities
- EN 16276 - in road tunnels

#### Systems and maintenance standards

- EN 50171 - Central power supply systems
- EN 50172 - Emergency escape lighting systems
- EN 62034 - Automatic test of battery powered emergency lighting



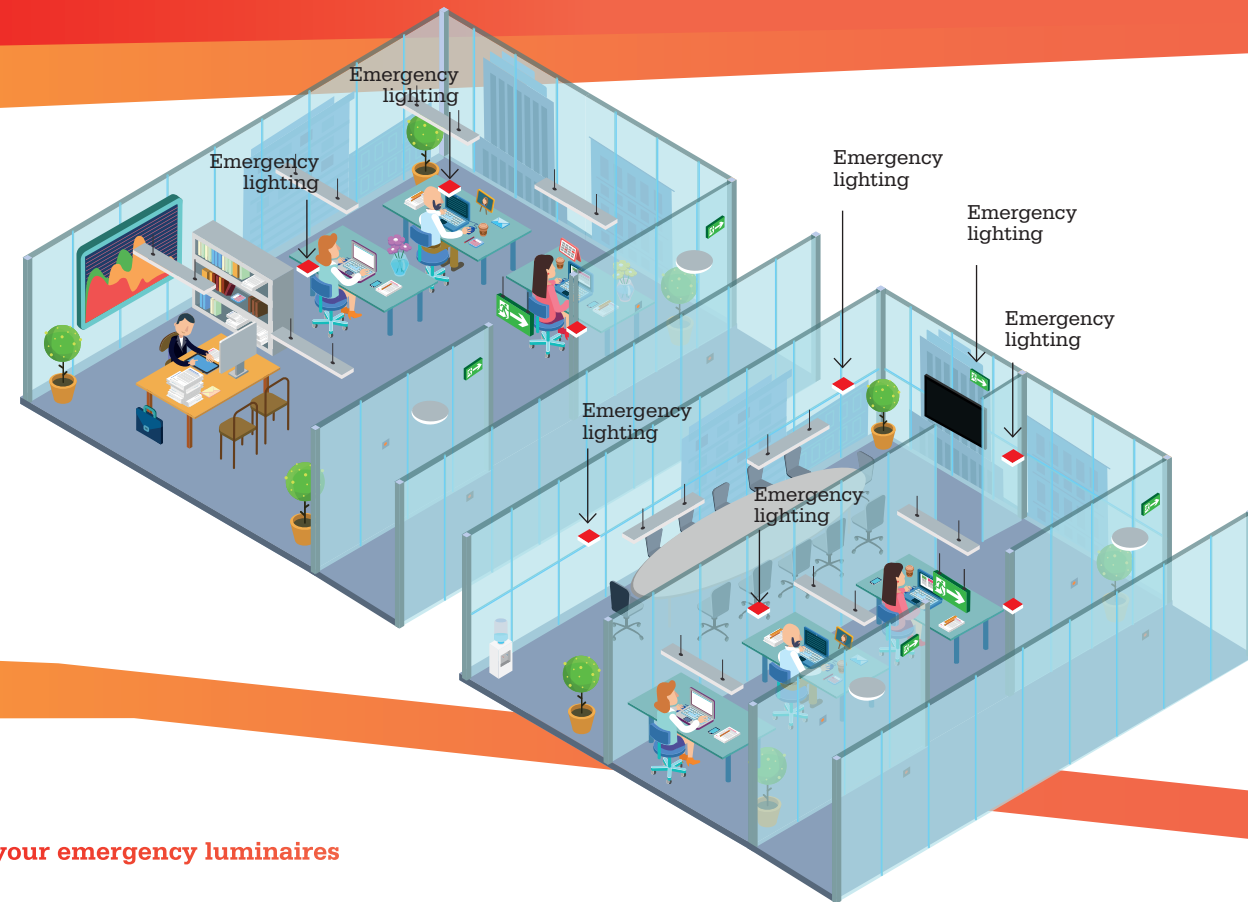
# Emergency lighting: always there to save lives!



## Continuous assessment

Emergency lighting needs continuous assessment through life to ensure it is fit for purpose. Changes to building layout or use may mean that the emergency lighting is no longer correct or adequate and needs reconfiguration or reconsideration.

Therefore the emergency lighting should be regularly assessed to ensure it is correct and provides a safe environment in the event of an emergency. Failure to do this is one of the top five compliance issues with emergency lighting.



## Maintenance

It is a legal requirement that your emergency lighting works correctly.

When was the last time your emergency luminaires were tested?

- Business owners and/or tenants are legally obliged to test their emergency lighting regularly to ensure their systems function as intended.
- Business owners and/or tenants will be liable in the event emergency lighting systems fail to operate.
- Requirements can even be stricter in some European countries depending on local regulations.
- A short functional test ensures that the luminaire operates correctly.

